



JK SOMME

SAGA[®]

150

AUTOMATIC ROUND CAN SEAMER

<180 cpm



Stainless Versión

JK SOMME[®]
Legendary Can Seamers



SAGA[®]
150

COMPACT ROUND CAN SEAMER - MEDIUM SPEED



New generation fully automatic **CAN SEAMER** suited for seaming tinplate, aluminum or composite round cans, with diameters from **52 to 99 mm** (optional **<110 mm**) and heights from **30 to 120 mm** (higher on special demand, **<240mm**). Driven by a 3 KW (4 Hp) motor with **electronic DC inverter**, speed variator, for operating between **40 and 180 closed cans per minute**, depending on can size and product inside.

x4 revolving spindles rotary seaming turret with four solid bars guided from top and bottom, rigidly mounted. Each spindle with free rotating seaming plates-lifters. x4 seaming chucks, x8 seaming rolls (one first one second per spindle). Positive assembly of can and lid to minimize spillage. Revolving can seaming principle. Straight line can in feed conveyor with timing screw.

Quick and simple seam pressure regulation. Second operation "off seam" to permit first operation seam checks. "No can-no lid feed" solenoid. Single roll lid separator. If the lid supplies runs to low the machine stops. Simple can size & can height change over. Minimum maintenance, easy to adjust and clean and surprising the quality and stability of the seam achieved. Simple grease and oil lubrication. Variable speed electronic DC converter motor drive. 24 volts DC safety control. Stainless steel control electric panel. Digital seamed can counter.

STAINLESS STEEL VERSION: Stainless steel COLLECTING TRAY below for collecting from the can fallen solid products or overfilled liquids. Most of the external parts in contact or not with the can & product stainless or treated against corrosion.

CE SAFETY GUARDS, stainless steel frame & transparent polycarbonate panels for noise abatement and door interlocks for safety. **Sturdy** and **reliable**, it will operate with safety and without requiring any highly qualified engineer for its running and maintenance.



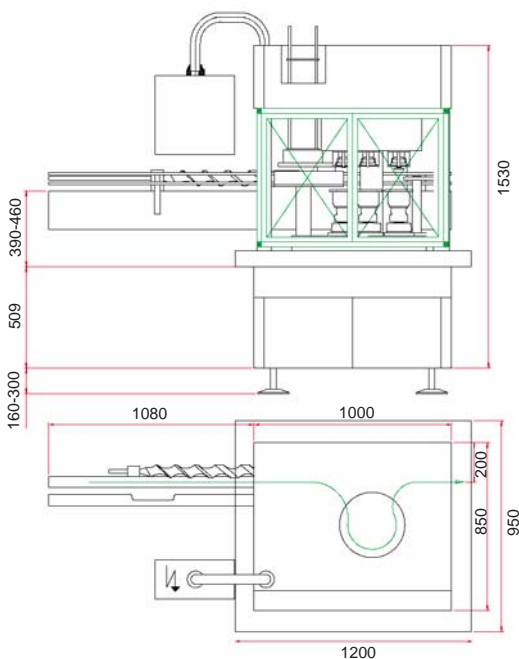


SAGA[®]
150

Optional:

- * Under lid steam flow.
- * Under lid gassing.
- * Filler power drive.

DIMENSIONS



Seaming Spindles	Accepted Can Diameters	Accepted Can Heights
4	52 - 99 mm	30 - 120 mm
Production	Occupied Space	Weight
<180 cpm	1200 x 950 x 1530 mm	1800 Kgs
* Under special order: can height <240 mm.		



**Master 346
BOX**

Ø165 mm
Up to 70 cpm
with Clincher

Log on to the web !!



<http://www.sommecan.com>

Since 1905

JK SOMME - OSCAR SOMME & ASOCIADOS S.L.

Pol. Ind. Ugaldeguren I, P3-II Pab. 7
E-48170 ZAMUDIO (BILBAO) VIZCAYA - SPAIN
Tel. +34 94 454 48 10 / Fax. +34 94 454 44 73

E-mail: contact@sommecan.com
<http://www.sommecan.com>

Legendary Can Seamers



✓ OSHA - Cert.